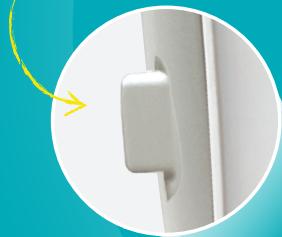


BECAUSE HYGIENE MATTERS

The used strip can easily and hygienically be removed from the meter with the Strip Ejector. Never touch your used strips again.

Strip Ejector



SIMPLY CLEAR

The Accu-Chek Instant system makes testing easy and understanding your results simple.

Learn more at www.rochediabetescareme.com

SIMPLY CLEAR



80% of a study participants agreed that it is more sanitary to remove the used strip with the ejector.¹

216_AR.S.Instant.032021-Exp032023

1 Harvey C, Koubek R, Begat V, Jacob S. Usability evaluation of a blood glucose monitoring system with a spill-resistant vial, easier strip handling and connectivity to a mobile app. Improvement of patient convenience and satisfaction J Diabetes Sci Technol July 2016.

2 Breitenbeck et al. Accuracy assessment of a blood glucose monitoring system for self-testing with three test strip lots following ISO 15197:2013/ISO 15179:2015. J Diabetes Sci Technol. 2017 11(4) 854-855.

3 Kocher S, et al. Comparison of lancing devices for self-monitoring of blood glucose regarding lancing pain. J Diabetes Sci Technol. 2009;3(5):1136-1143.

Roche Diabetes Care Middle East FZCO | Jebel Ali Free Zone | PO Box 263990, Dubai, UAE. ACCU-CHEK, ACCU-CHEK INSTANT and SOFTCLIX are trademarks of Roche. ©2021 Roche Diabetes Care Middle East FZCO. All Rights Reserved.

Locally Distributed by:
Farouk, Maamoun Tamer & Co., PO Box 180 Jeddah 21411 Saudi Arabia.
For more information: Please contact the Toll Free: 800 850 0829

license number MID\DU5210013

UNDERSTAND AT A GLANCE

The **Target Range Indicator** lets you check your blood sugar to know at a glance, whether it's high, low or in-range.



EASY TESTING

7, 14, 30, and 90 day
test averages

Easy-to-read results
on a large, backlit display

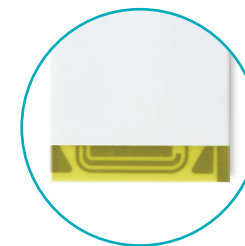
Strip ejector



Accu-Chek Softclix
lancing device
Gentle lancing that's
virtually pain free³



Advanced Accuracy
of 10/10² for reliable
results you can trust



Wide dosing area
for easy blood
application



720 value memory
with settable time &
date on meter